



Asbestos Case Study

Asbestos

The Old Pump House - Lancaster



Experts in Providing
Specialist Services
Nationwide



The Old Pump House, Lancaster

The Shield Asbestos Removal Warrington branch was contracted by Nick Brookes Group - Demolition, to undertake asbestos removal at The Old Pump House In Lancaster. Ahead of a full premises refurbishment to the listed building, the team had to remove and dispose of asbestos waste.

The premises were scheduled to undergo a renovation and change of use to apartments as a part of the broader revitalisation of the former industrial area. Great care was required as a result of the building holding a listed status.



Overview of Enclosure Entrance and Decontamination Unit

A structural survey was carried out by Edge Building Consultants, prior to works commencing, which deemed it safe to access the building with some areas requiring propping. This was approved and planned by Shield's Temporary Works Coordinator.

SRK Scaffolding was used to form a roof for the enclosure. The scaffold erection was complex due to the contamination within the basement rubble. Air monitoring was carried out by APEC Environmental throughout the scaffold erection and asbestos enclosure set-up processes.

A team of two Supervisors and six Operatives was deployed on the empty site operating Monday to Friday for a period of nine weeks until the required works were completed.

Prior to commencement of works, Shield operatives and Scaffolders from SRK were given a site induction and tool box talk on the site RAMS by the site supervisor to ensure all were fully aware of the full scope of works and associated potential site hazards and risks.

Site welfare was provided on site ensuring full compliance with CDM 2015.

A single enclosure was erected to facilitate the required removal works. Each enclosure was erected in line with CAR2012, HSG247, L143 & Shield Asbestos Policy & Procedure ASP15.

The original timber flooring was heavily rotted, so a scaffold deck was installed which allowed Shield to safely remove the timber floor so that operatives could enter the basement to work. There were numerous steel tanks dumped which hot works were required to remove.

Multi needle Injection, mist suppressant and shadow vacuuming

Shield scope of work comprised of:

- Removal of asbestos insulation debris to various surfaces
- Removal of asbestos pipe insulation by the wip and cut method where practicable
- removal and disposal of several desegregated pre-existing wooden floors and roof, as contaminated waste
- Full decontamination of all surfaces

A total of nearly 80 tonnes of asbestos waste was removed using six 35m³ sealed asbestos waste skips.

Upon completion of all removal and enclosure decontamination work. The enclosures were inspected by our onsite supervisor who carried out a pre analyst inspection in line with our company policy AR125 Analyst Enclosure Handover Process Form. Prior to being handed over to the clients nominated analytical contractor to commence the 4 Stage Clearance procedure.



Challenging access and confined space working were encountered

The Old Pump House, Lancaster

The site was situated in the middle of a housing development, so residents were sent letters explaining the nature of the works. Hoardings and heras fencing were used to segregate Shield's compounds and welfare area. Noise-reduced generators were used to minimise the impact on the residents.

A total of 2,496 man hours were worked on site with no accidents or incidents reported.

First Floor Area:

Post completion of works showing scaffolding structure to facilitate the forming of the enclosure to roof area.



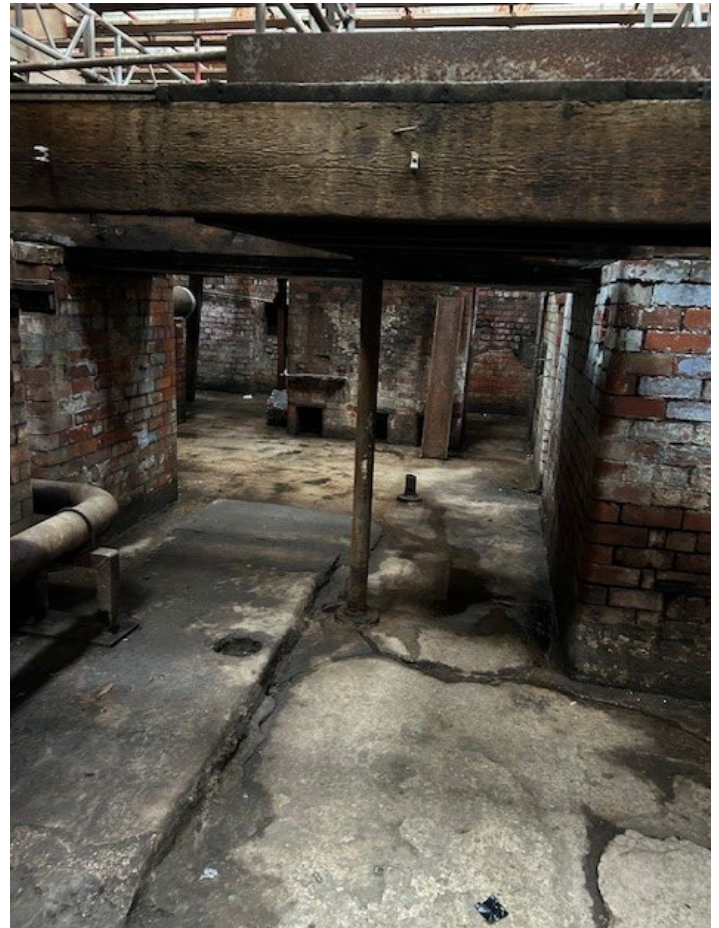
View showing all removed former pumping services.

"This was a very tricky scheme to undertake and we had no concerns in Shield's capabilities in ensuring this scheme was delivered in a safe and efficient manner and they didn't disappoint. Great effort from Dan and his team!"

Keiran Hatcher, Contracts Director

First Floor Area:

Post completion of our contracted works.



Further view showing all removed former pumping services.



Further shot of first floor following the completion of works and image of pre-existing roof structure prior to the construction of enclosure and going live.